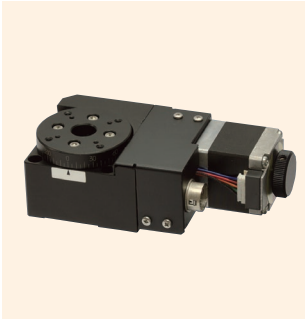


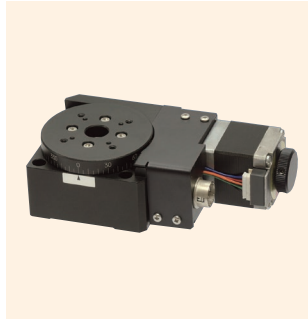
## High-Grade Rotary Stage $\phi$ 40, $\phi$ 50, $\phi$ 60, $\phi$ 70

Rotating bearing type

0.75 A/phase 0.75 A/phase motor



↑ TARS-4036-GM



↑ TARS-5036-GM



↑ TARS-6036-GM



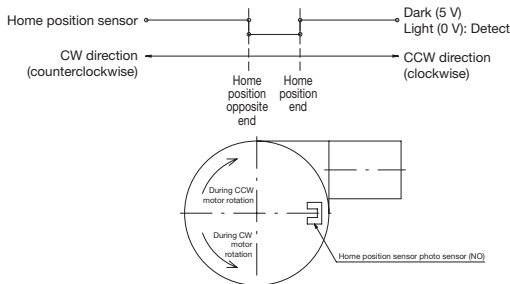
↑ TARS-7036-GM

### Features

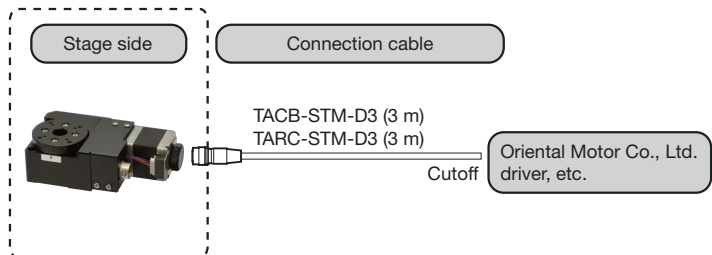
- A rotary stage adopting ball bearings for the travel guide.
- The center has a transmission hole drilled.
- Versatile use for precision positioning of cameras, sensors, workpieces, and more.

Model number	TARS-4036-GM	TARS-5036-GM	TARS-6036-GM	TARS-7036-GM
Model name	Rotary Stage			
Travel direction	Rotation direction			
Travel amount	360°			
Stage surface	$\phi$ 40 mm	$\phi$ 50 mm	$\phi$ 60 mm	$\phi$ 70 mm
Motor used	PK523HPB equivalent (5-wire type pentagonal wiring, 0.75 A/phase)			
Resolution	0.01°			
Travel guide	Ball bearings			
Runout	0.01 mm			
Surface runout	0.04 mm		0.05 mm	0.06 mm
Positioning accuracy	0.08°			0.05°
Repeatability	$\pm$ 0.003°			
Lost motion	0.02°			
Parallelism	0.075 mm			
Load capacity	29.4 N (3 kgf)		39.2 N (4 kgf)	
Mass	0.4 kg	0.5 kg	0.6 kg	0.7 kg
Maximum speed (at 5,000 pps)	50°/s			
Main materials/surface treatment	Aluminum alloy/black satin anodized finish			
Home position sensor	Normally open contact (make contact, A contact) operation, photo sensor			
Pre-home sensor	-			
Limit sensor	-			
Applicable cables	TACB-STM-D3, TARC-STM-D3			

### ◆ Sensor operating logic and timing chart



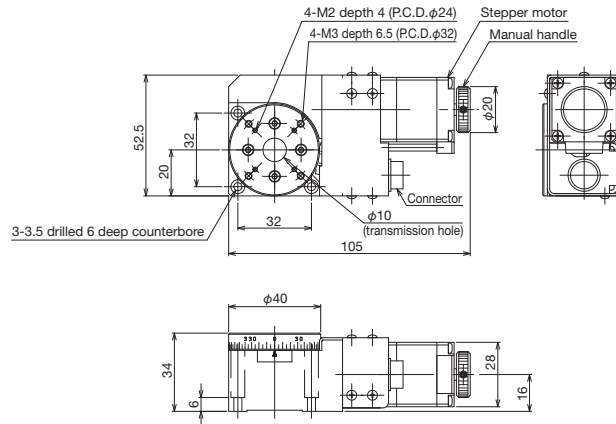
### ◆ Connection method: Connection cable and driver



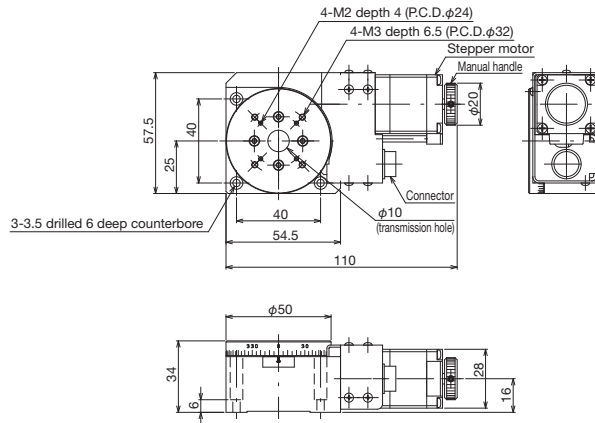


# High-Grade Stages ◀ Motorized Stages ◀

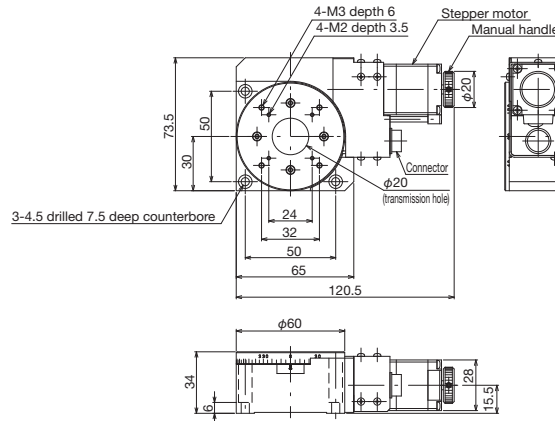
## Product Appearance



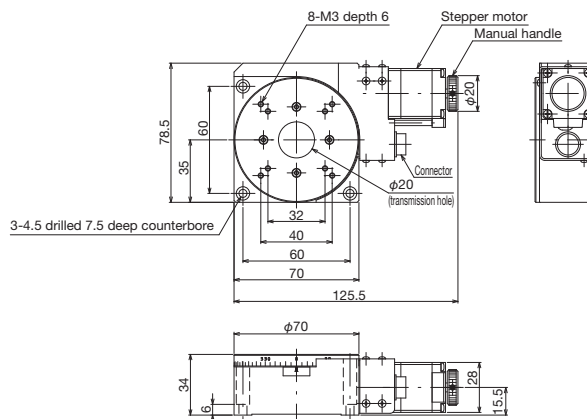
↑ TARS-4036-GM



↑ TARS-5036-GM



↑ TARS-6036-GM



↑ TARS-7036-GM

Motorized Stages	Automated Products for Microscopes	High-Grade Stages	30 mm x 30 mm (ø30 mm) Connector Stages	Class Roller Stages	Ball Bushing Stages	High-Precision/High-Rigidity Stages	Z-Like Stages	TTR Stages	Connector Cases	Actuators
------------------	------------------------------------	-------------------	---	---------------------	---------------------	-------------------------------------	---------------	------------	-----------------	-----------